



# PORTFOLIO

**M&M PROFUTURE TRAINING, S.L.**

**YOUR GROWTH  
IS OUR  
CHALLENGE**



**PIC NUMBER: 942162553  
IOD: E10025039**



**BARCELONA  
2024**

# INDEX

**01** WHO WE ARE

**02** SERVICES

**03** BARCELONA

**04** MOBILITIES

**05** EU  
COOPERATION

INTERNSHIPS

COURSES

**06** CONTACT



profuture  
training

# 1 - WHO WE ARE

M&M Profuture Training, S.L. is a modern trainer provider and intermediary organization founded in 2014 whose staff has wide experience in managing and implementing training procedures and activities in a great diversity of settings.

M&M staff has actively participated and coordinated projects under different local and European programmes and its strength is based on the knowhow of its team and the partnership with multinational associates from all over Europe and beyond.

M&M has a close professional relationship with different organizations, such as incubators, schools, educational organizations, business centres, companies, social organizations and industrial networks.



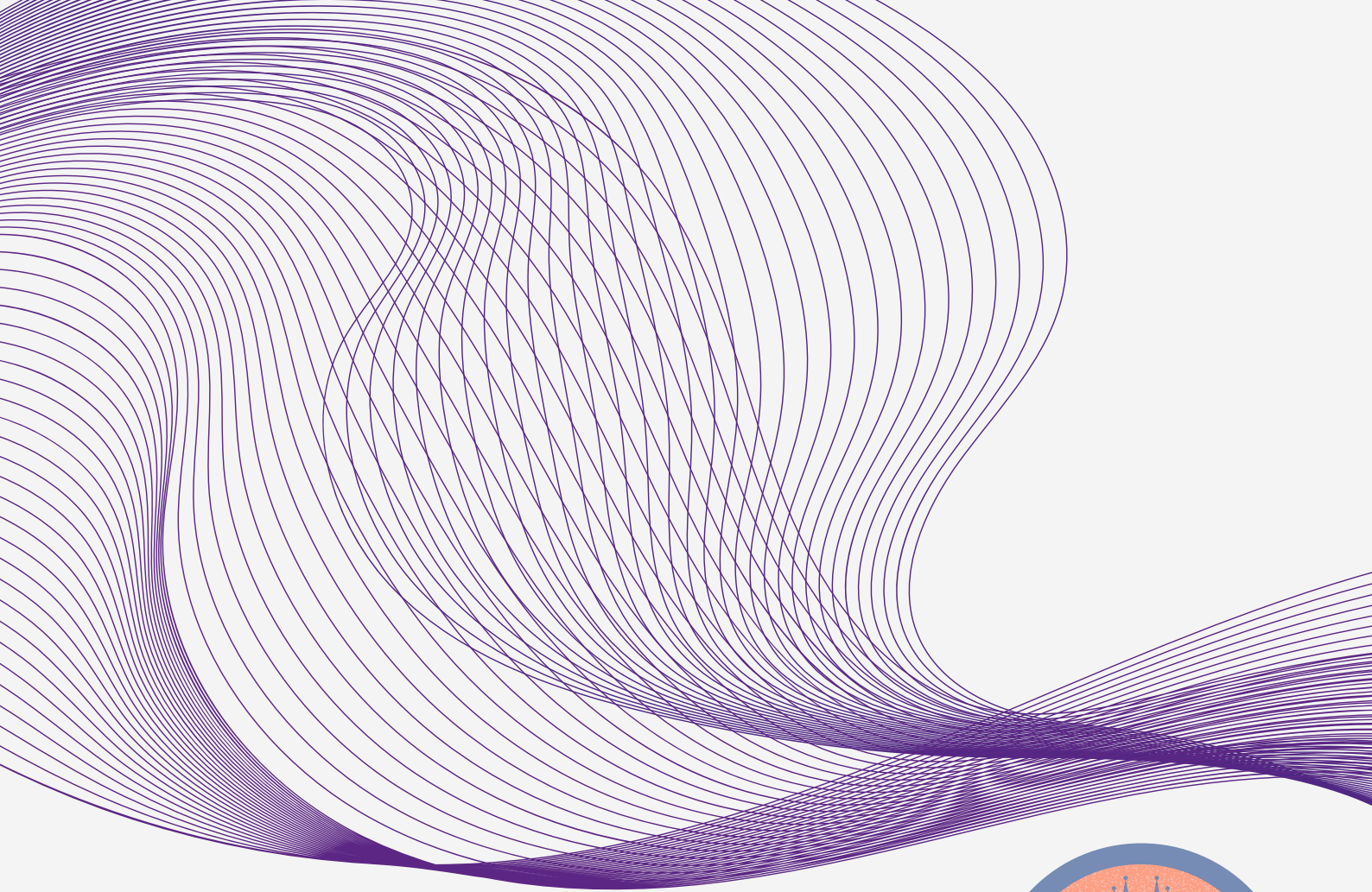
# 02

## SERVICES

M&M provides the following integrated tailored services:

- Analysis of training needs
- Organization of tailored training and courses
- Pedagogical approach of training and development of educational models
- Evaluation of learning processes
- Promotion of workers' and students mobilities to improve their training, experience and profiles
- Design and creation of learning units and didactic materials
- Organizational support & production and transfer of innovation and know-how
- Business consulting & support
- Project planning, submission and management
- Assistance in improving employment and initiatives (e.g. orientation) paying special attention to women, young people and other groups in social and labour exclusion risk





03

## BARCELONA



Barcelona is the capital of Catalonia and it is a city with a wide range of original leisure options that encourage you to visit time and time again. Overlooking the Mediterranean Sea, and famous for Gaudí and other Art Nouveau architecture, Barcelona is one of Europe's trendiest cities.

It has a large metropolitan area that includes 36 municipalities, among which it has the most political and economic weight.

All metropolitan cities need a large transport network.

Currently, Barcelona is recognized as a global city for its cultural, financial, commercial and tourist importance.

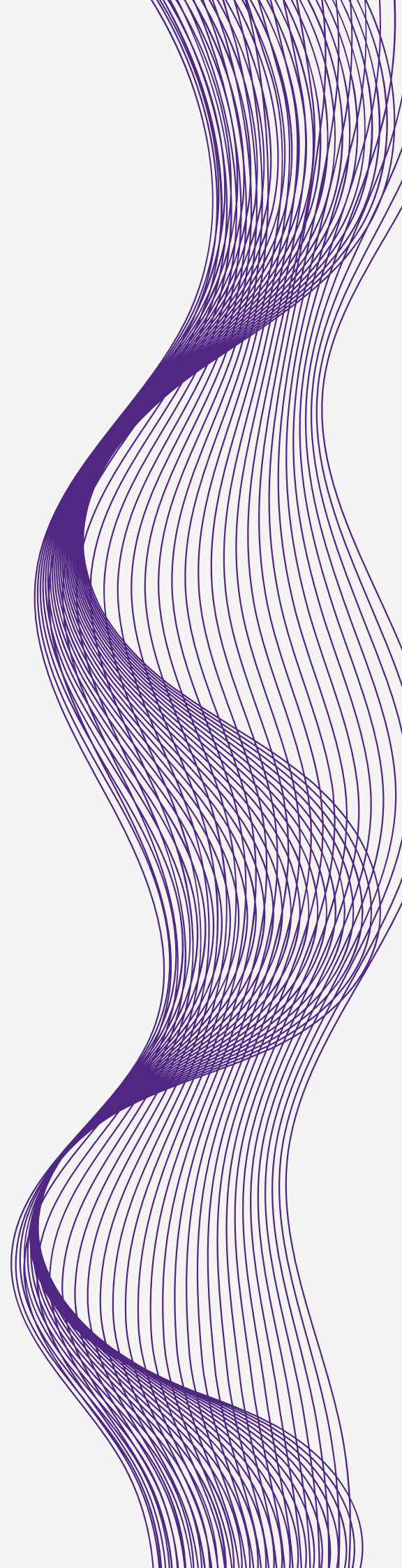
# 04

## MOBILITIES

M&M Profuture Training offers individual mobilities under the Erasmus+ call or other European calls/programmes and at private level in the sectors of School, Vocational Education and Training (VET), Adult and Higher Education.

- Internship and work placement programs for your students.
- Training programs for your teachers and staff.

We can manage accomodation, local transport and transfer if it is required.



# MOBILITIES INTERNSHIP

## **A TYPICAL VET WORKPLACEMENT/INTERNSHIP PROGRAMME INCLUDES:**

1. Transfer from and to the airport.
2. Organization of the necessary local transport.
3. Self-catering accommodation (private flats in individual or double room).
4. Welcome program.
5. Tutoring and mentoring the students during the whole experience.
6. Monitoring and evaluation.
7. Administrative work related to the project management.
8. Europass mobility.



# INTERNSHIPS

# MOBILITIES

## **M&M CAN HOST WORKPLACEMENT VET LEARNERS AND STAFF IN THE FOLLOWING FIELDS**

Business & administration

Hospitality & tourism

Creative industries

Commerce

Gastronomy

Mechanical/Electrical/Carmechatronic

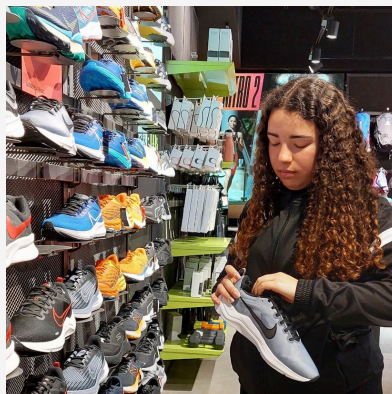
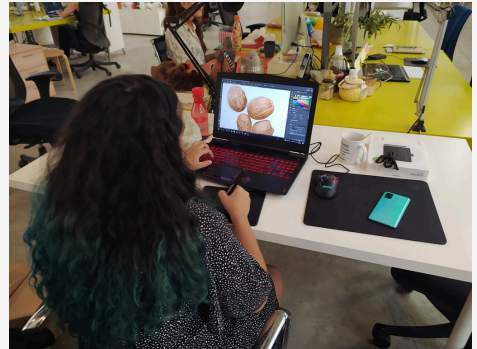
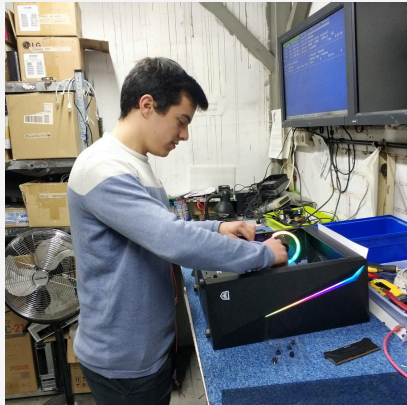
Education/Pedagogy

Healthcare



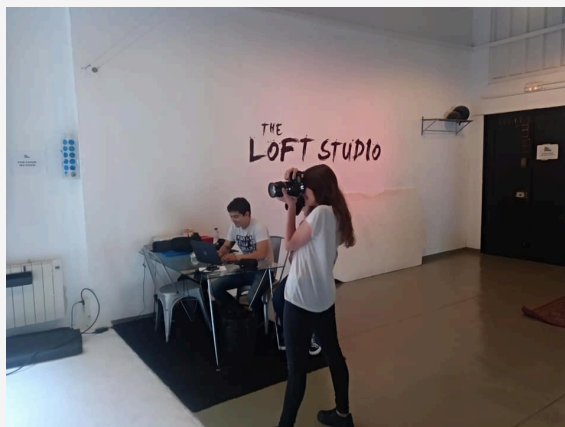
# INTERNSHIPS

# MOBILITIES



# INTERNSHIPS

# MOBILITIES



# INTERNSHIPS

# MOBILITIES

We offer you a diversity of training opportunities based on our own ready-made programs or new courses tailored to your demand and catering to your specific interests, timing and calendar with the best in-company or external know-how.

Registered in the Foundation for Employment as a training entity to provide training with registration code:  
9900022951

**Fundación Estatal**  
*PARA LA FORMACIÓN EN EL EMPLEO*



SOME OF OUR ALREADY AVAILABLE OWN TRAINING PROGRAMMES COMPREHEND:

- Communication Skills, Inclusion, Integration and Intercultural Communication;
- Creativity, Gamification and Soft Skills;
- Digital Tools, Artificial Intelligence and Educational Technology;
- Pedagogy and Learning Approaches;
- Outdoor Education and Green Pedagogy;
- School Innovation and Teaching Methodologies;
- STEAM and Educational Robots;
- Well Being in Education, Coaching, Mentoring and Emotional Intelligence;

We can facilitate any other kind of training, be it technical or humanistic by means of our network of external expert trainers.

# COURSES

# MOBILITIES

## WHAT WE OFFER

### **Option 1**

#### *Duration*

5/10 days (Monday to Friday)

#### *Content*

- Course fee and coffee breaks
- Learning materials
- Certificatin, Administration and organizational costs

### **Option 2**

#### *Duration*

5/10 days (Monday to Friday)

#### *Content*

- Course fee and coffee breaks
- Learning materials
- Certification, Administration and organizational costs
- Airport transfer
- Local transportation

### **Option 3**

#### *Duration*

5/10 days (Monday to Friday)

#### *Content*

- Course fee and coffee breaks
- Learning materials
- Certification, Administration and organizational costs
- Airport transfer
- Local transportation
- Accomodation

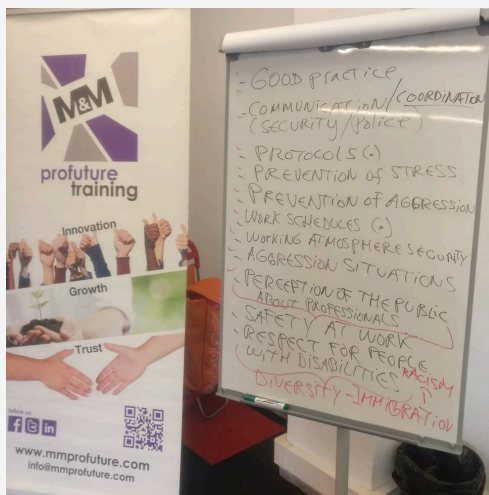
# COURSES

# MOBILITIES



# COURSES

# MOBILITIES



- GOOD PRACTICE
- COMMUNICATION / COORDINATION (SECURITY / POLICE)
- PROTOCOLS (C)
- PREVENTION OF STRESS
- PREVENTION OF AGGRESSION
- WORK SCHEDULES (C)
- WORKING ATMOSPHERE SECURITY
- AGGRESSION SITUATIONS
- PERCEPTION OF THE PUBLIC ABOUT PROFESSIONALS
- SAFETY AT WORK
- RESPECT FOR PEOPLE WITH DISABILITIES
- DIVERSITY - IMMIGRATION

# COURSES



## 05

## EU COOPERATION

### COOPERATION BETWEEN ORGANIZATIONS AND INSTITUTIONS

We work together with other organizations for the development of the education, training and youth sectors to find innovative approaches and generate attractive training projects in line with European needs to create a more modern, dynamic, committed and professional environment within of organizations and outside them.

During the last years we have developed a multitude of projects, the last ones being implemented:

KA220-HED: Educational Robotics to Support Inclusive Education in Primary Schools,  
Robots4Inclusion

KA220-VET: Entrepreneurial Skills for Social Sciences

KA220-VET: Online Professional Education for Physiotherapists and  
other healthcare professionals on Domestic Violence

KA226-SCH: Digitally Improving Social and Emotional Skills  
of Primary School Teachers

KA204-ADU: Developing Innovative Approaches for the Social Integration of Female Migrants



profuture  
training

06

CONTACT



INFO@MMPROFUTURE.COM

---

